



ENIGMA

*Setting a new standard
in affordable safaris*

INTELLENGENT DESIGN

The Enigma Difference





The Design Difference

THE DIFFERENCE AN INTELLEAGENT DESIGN

MASTER FAMILY 8

Stunning Bow Views
Can accommodate
up to 4 Guests

1 TOP SUN DECK

Spacious 80m² sundeck
ideal for sunbathing,
reading, meditation
or even yoga!

2 SKY LOUNGE

Dine in style to a
splendid backdrop of
stunning sea vistas

3 THE TERRACE

A sunset cocktail
or dining "al fresco"
-not a problem on
the sea view
terrace.

STANDARD SUITE 7

1 x Standard
Suite

STANDARD CABINS 6

4 x Standard
Lower Deck

SUPERIOR CABINS 5

7 x Superior
Sea View

DIVE DECK 4

Spacious 70m² Dive
Deck and Platform
Equipped for 24 tanks
and 2 Dive Tenders

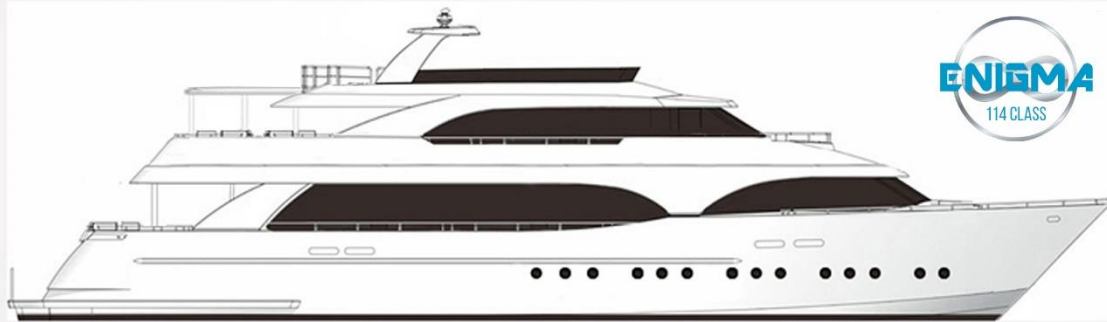
DESIGNED FOR

- Modern Style
- Space
- Views
- Comfort
- Convenience



Quality and Affordability

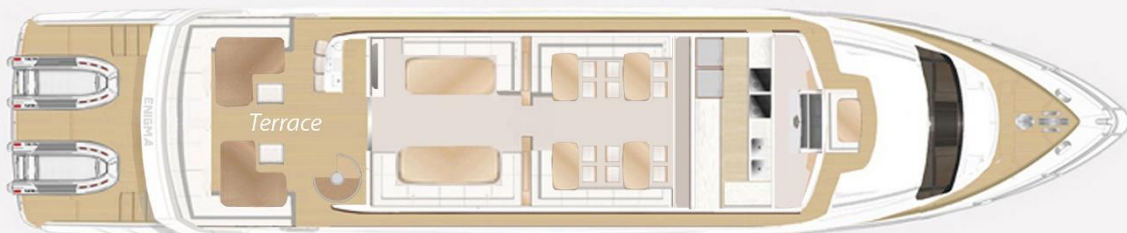
ENIGMA



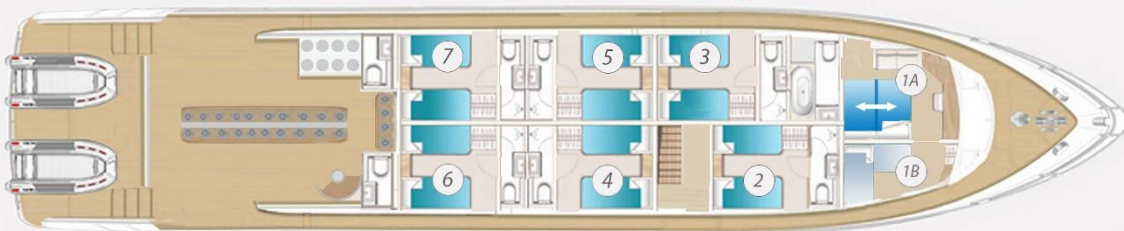
SUN DECK



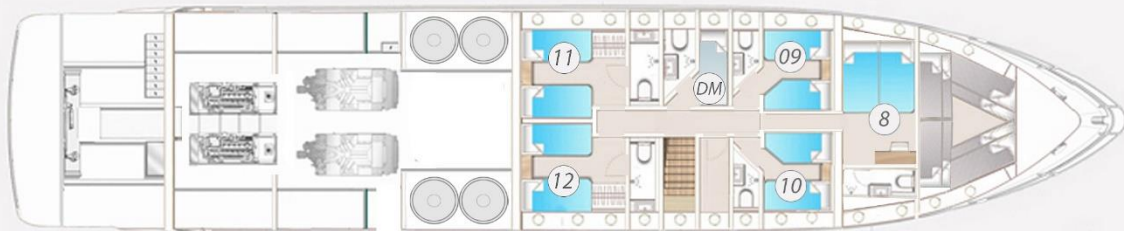
UPPER DECK: *Saloon and Terrace*



MAIN DECK: *6 Seaview Superior cabins and 1 Master/Family*



LOWER DECK: *4 Standard Cabins, 1 Standard Suite and DM Cabin*



Maximum Capacity: 24 Guests + 2 CDWS Qualified Guides
Crew: 9 Length: 32 Meters Max beam: 7.5 Meters

GUEST FACILITIES

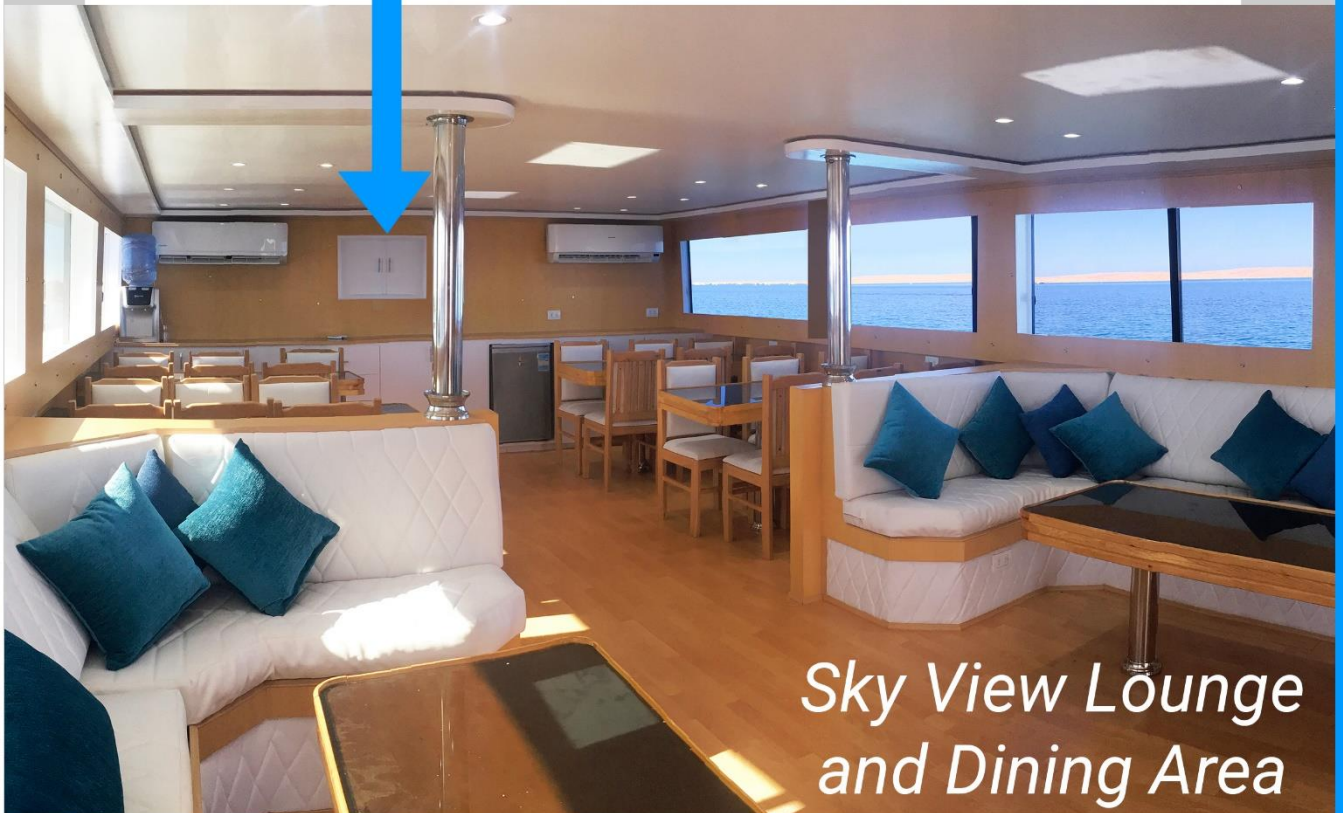
Comfort-Space-View



ENIGMA



On Board
Cuisine



*Sky View Lounge
and Dining Area*

Quality and Affordability

ENIGMA



Dining In



Uniquely located on the upper deck to allow dining and bar facilities inside and out! Inclusive all day cold/hot drinks plus refreshments



Dining Out

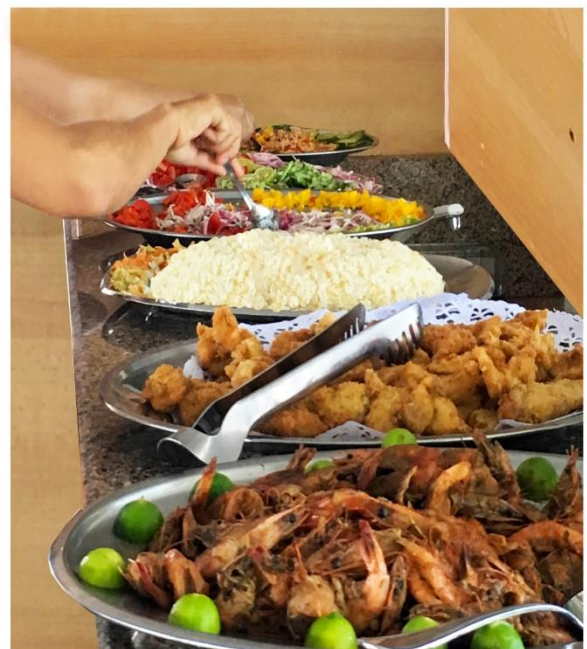
Quality and Affordability



MENU

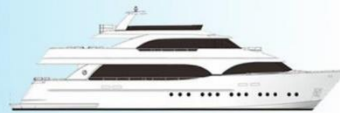
Special Diet?

Our Chefs are able to cater to a variety of different cultural traditions, as well as provide for guests requiring vegetarian, vegan or gluten free options.

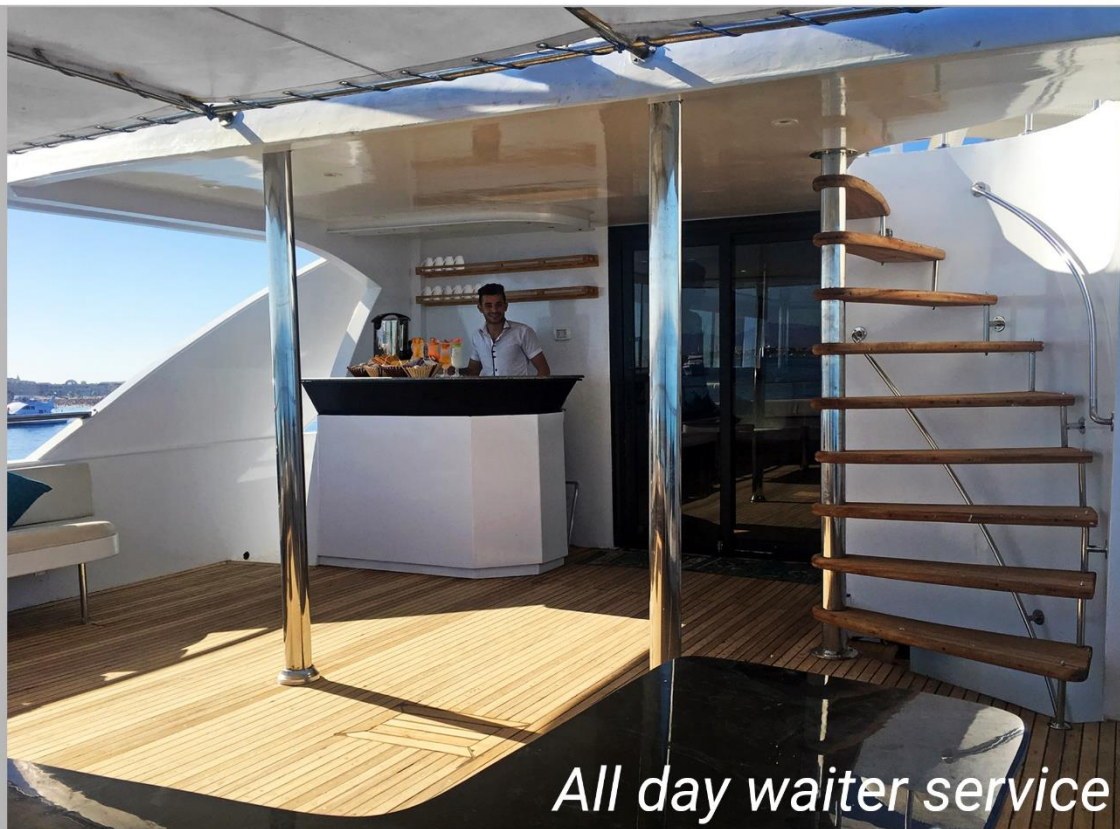


Quality and Affordability

ENIGMA



The Terrace



All day waiter service



*Dining, cocktails
views, relaxing*

Quality and Affordability

ENIGMA



SUN DECK



Quality and Affordability

ENIGMA



Technical

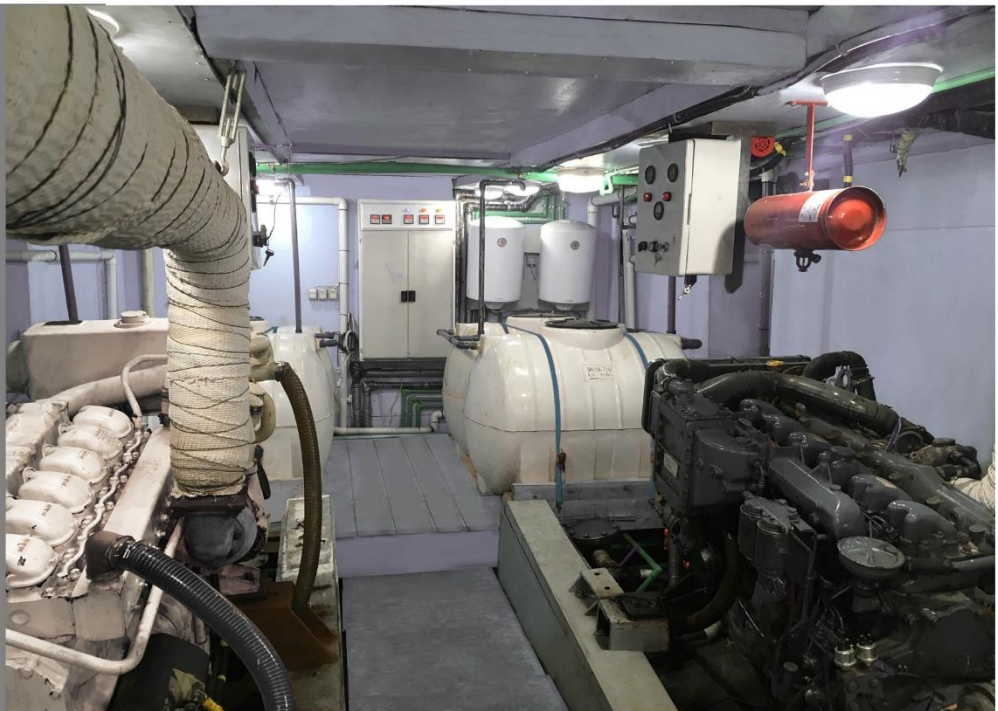


Engines: Mann

Generators:
Perkins 100kw

Compressors:
Bauer

Cruising Speed:
10 Knots



Quality and Affordability

CABIN CHOICES

To Suit All Budgets



ENIGMA

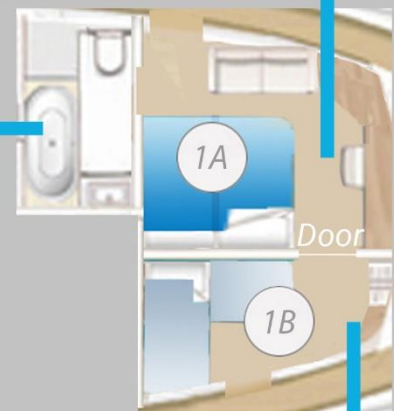


Master

Bookable either singly as a Master Cabin (2 persons), or with a bunk cabin extension (+2 extra persons)

Master Family/Group Extension Option

Combined, the Master and Bunk cabin extension offer both great views and value for up to 4 persons.



Features:

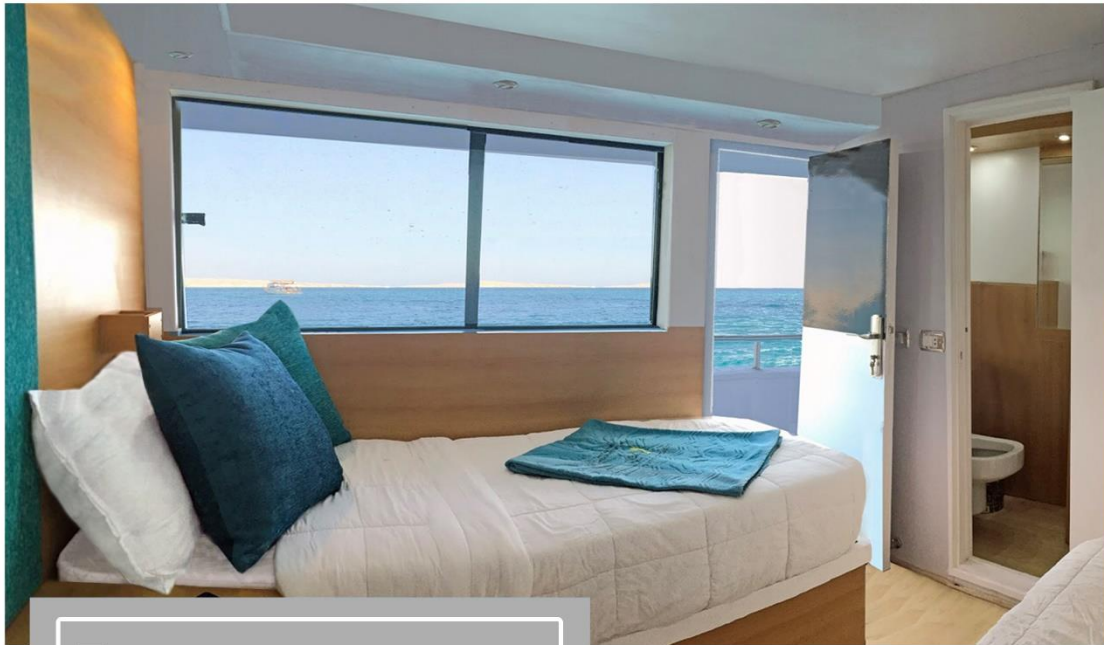
- Bow View
- Individual Aircon
- Fridge
- Twin/Double Layout
- Bath/Shower
- Family/group extension option for 4 persons



Family or Group Extension

Quality and Affordability

ENIGMA



Superior (6)

Features:

Size: 8 m²

Mid Deck: Sea View

Mini Bar Fridge

Individual Air Con



Quality and Affordability



Standard (5)



Features: Lower Deck, Individual Air Con. Twin Layout, 8 m²



Quality and Affordability

DIVING-KITING-FREEDIVING

All Purpose Facilities



ENIGMA



DIVE DECK



Free
Nitrox

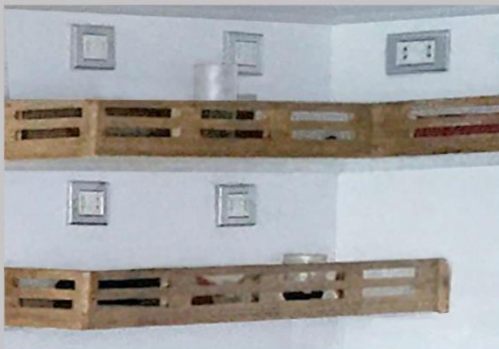


Quality and Affordability

ENIGMA

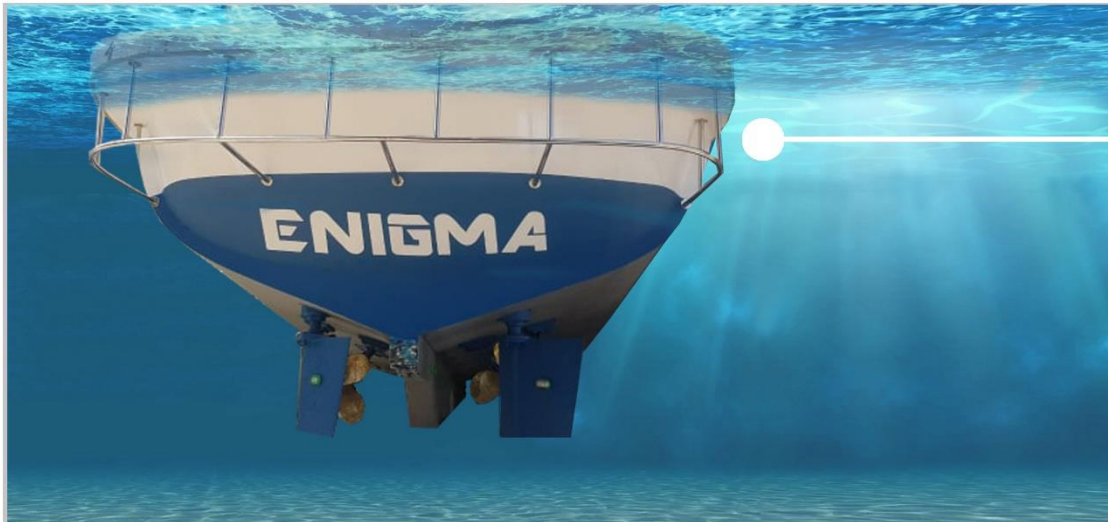


PLATFORM



Dive Deck Camera Charging & Rinsing

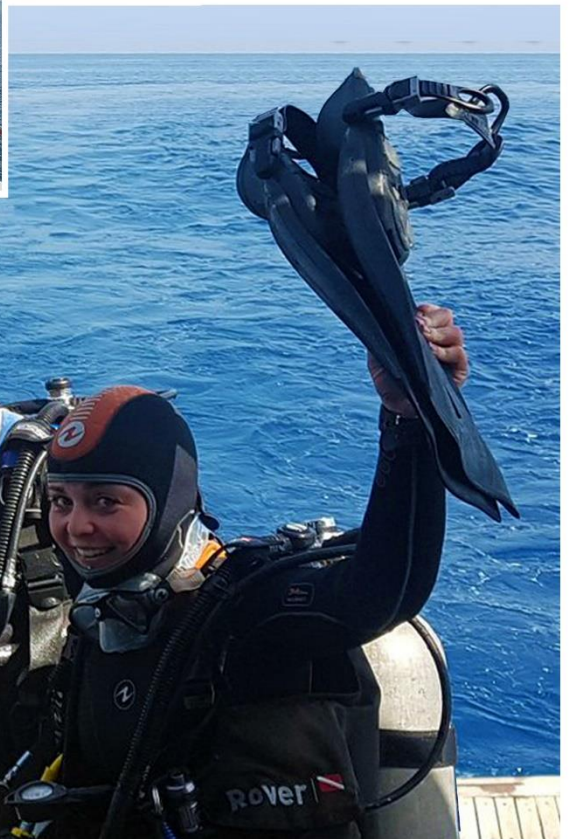
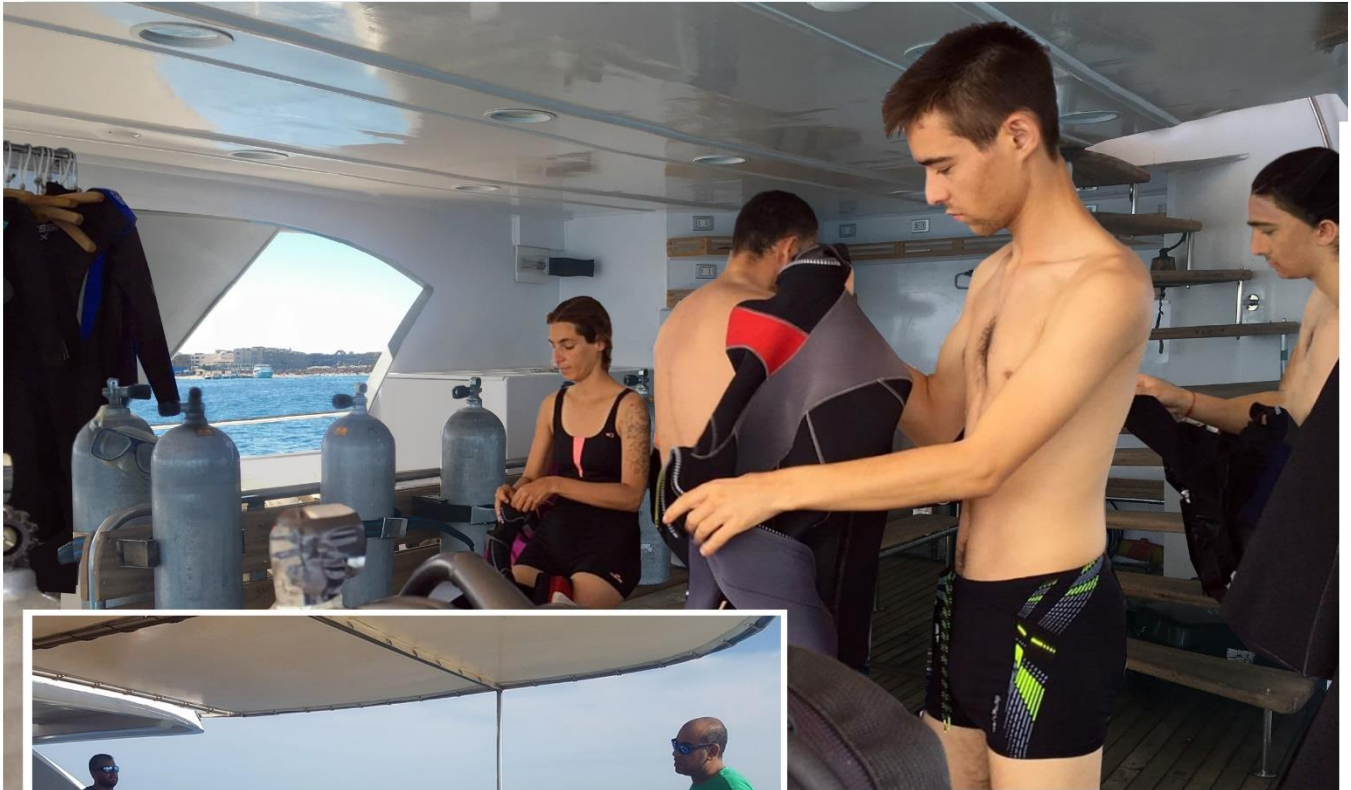
2 x Zodiacs



Easy Entry and Exit Guide Rails

Quality and Affordability

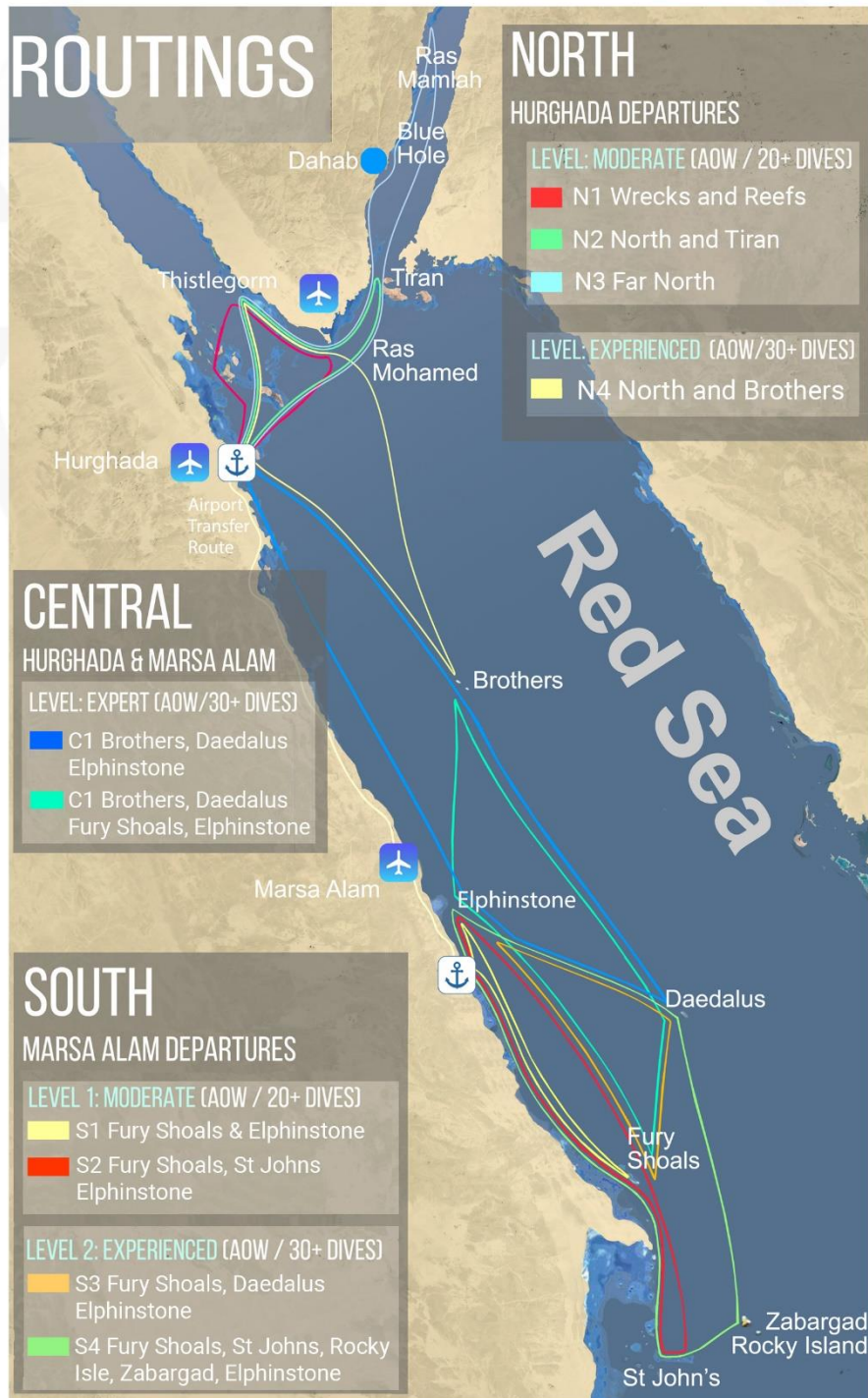
ENIGMA



Quality and Affordability

ITINERARY CHOICES

Standard or Tailor Made



ENIGMA



Quality and Affordability

ENIGMA



DESTINATIONS



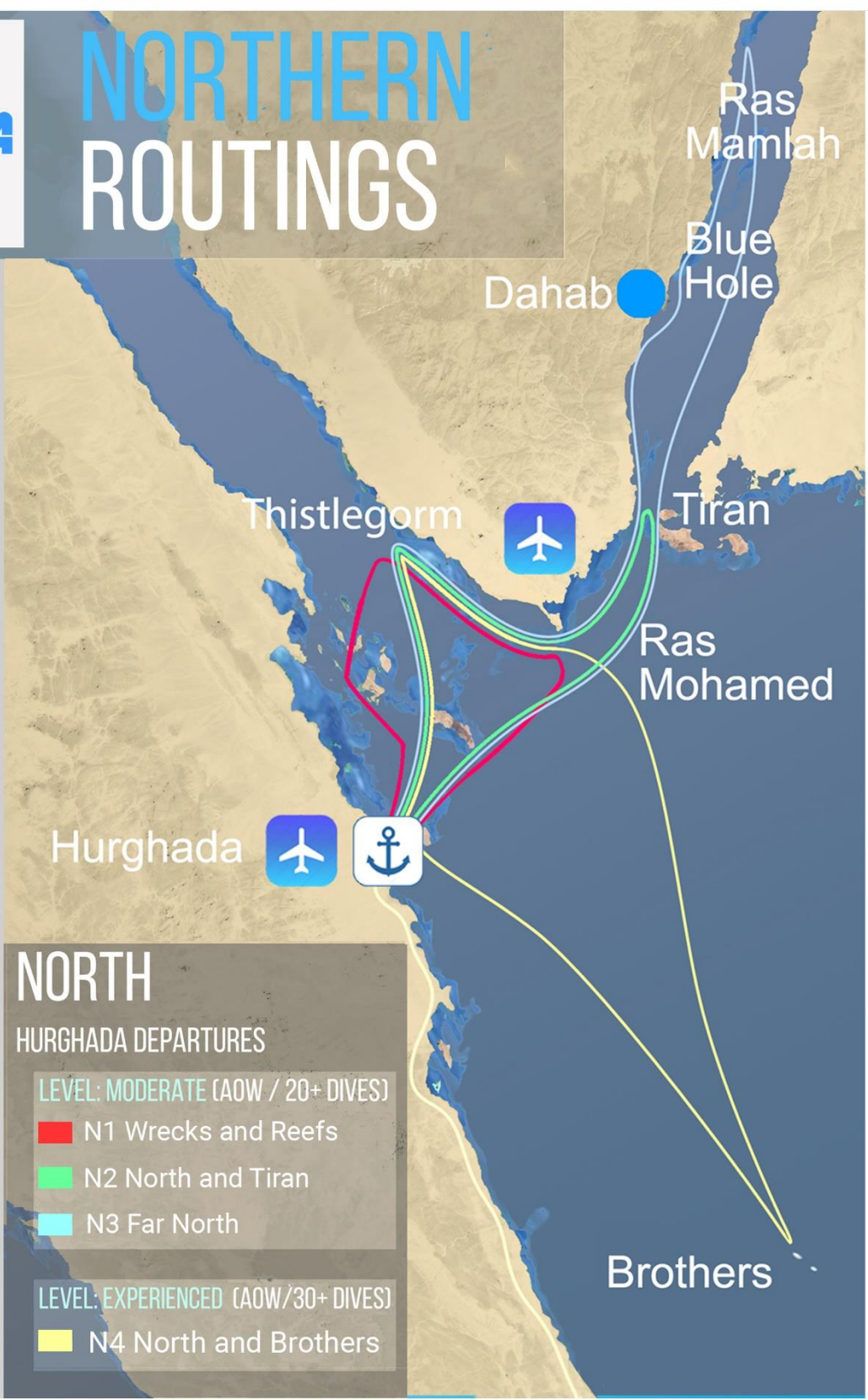
Quality and Affordability

ENIGMA



NORTHERN ROUTINGS

RED SEA ROUTINGS



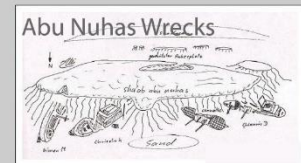
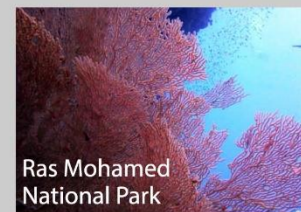
Quality and Affordability



WRECKS & REEFS

Level: Advanced Open Water
Experience: 20 Dives +

N1



HIGHLIGHTS

Soft Corals	<div style="width: 100%; height: 10px; background-color: #00AEEF;"></div>
Hard Corals	<div style="width: 80%; height: 10px; background-color: #00AEEF;"></div>
Wrecks	<div style="width: 100%; height: 10px; background-color: #00AEEF;"></div>
Marine Life	<div style="width: 100%; height: 10px; background-color: #00AEEF;"></div>
Sharks	<div style="width: 30%; height: 10px; background-color: #00AEEF;"></div>
Caves	<div style="width: 20%; height: 10px; background-color: #00AEEF;"></div>

World's top ten dive sites, the SS Thistlegorm & Ras Mohamed along with the spectacular wrecks of Abu Nuhas and the Straits of Gubal

ITINERARY

- Day 1 Check in 12 noon to 7am
- Day 2 Check Dives Hurghada
- Day 3 Abu Nuhas Wrecks
- Day 4 Rosalie Moller/Bluff Point
- Day 5 Kingston/SS Thistlegorm
- Day 6 Ras Mohamed
- Day 7 Ras Mohamed- Rtn Port
- Day 8 Check out

Please Note:

Please note that routes and / or departure / arrival ports may be subject to change due to weather conditions and / or coastguard instructions./ restrictions.



N2

NORTH & TIRAN

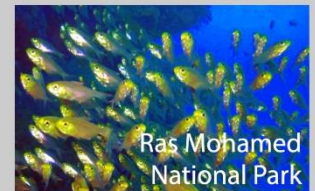
Level: Advanced Open Water
Experience: 20 Dives +



Thistlegorm Wreck



Tiran



Ras Mohamed National Park



Abu Nuhas Wrecks

HIGHLIGHTS

Soft Corals	<div style="width: 100%; height: 10px; background-color: #00AEEF;"></div>
Hard Corals	<div style="width: 80%; height: 10px; background-color: #00AEEF;"></div>
Wrecks	<div style="width: 100%; height: 10px; background-color: #00AEEF;"></div>
Marine Life	<div style="width: 100%; height: 10px; background-color: #00AEEF;"></div>
Sharks	<div style="width: 20%; height: 10px; background-color: #00AEEF;"></div>
Caves	<div style="width: 20%; height: 10px; background-color: #00AEEF;"></div>

Two of the world's top ten dive sites, the SS Thistlegorm and Ras Mohamd along with the spectacular wrecks of Abu Nuhas and the Straits of Tiran

ITINERARY

- Day 1 Check in 12 noon to 7am
- Day 2 Check Dives Hurghada
- Day 3 Abu Nuhas Wrecks
- Day 4 SS Thistlegorm
- Day 5 Ras Mohamed
- Day 6 Tiran
- Day 7 Tiran- Return Port
- Day 8 Check out

Please Note:

Please note that routes and / or departure / arrival ports may be subject to change due to weather conditions and / or coastguard instructions./ restrictions.





FAR NORTH

Level: Advanced Open Water
Experience: 20 Dives +

N3



HIGHLIGHTS

Soft Corals	<div style="width: 100%; height: 10px; background-color: #00aaff;"></div>
Hard Corals	<div style="width: 80%; height: 10px; background-color: #00aaff;"></div>
Wrecks	<div style="width: 100%; height: 10px; background-color: #00aaff;"></div>
Marine Life	<div style="width: 100%; height: 10px; background-color: #00aaff;"></div>
Sharks	<div style="width: 30%; height: 10px; background-color: #00aaff;"></div>
Canyons	<div style="width: 50%; height: 10px; background-color: #00aaff;"></div>

Red Sea classics of the SS Thistlegorm, Ras Mohamed and Tiran combined with the world famous Blue Hole and the lesser visited sites of the Gulf of Aquaba

ITINERARY

- Day 1 Check in 12 noon to 7am
- Day 2 Check Dives Hurghada
- Day 3 Ras Mohamed
- Day 4 Tiran
- Day 5 Gulf Aquaba
- Day 6 Gulf Aquaba (Blue Hole)
- Day 7 Thistlegorm -Return Port
- Day 8 Check out

Please Note:

Please note that routes and / or departure / arrival ports may be subject to change due to weather conditions and / or coastguard instructions./ restrictions.

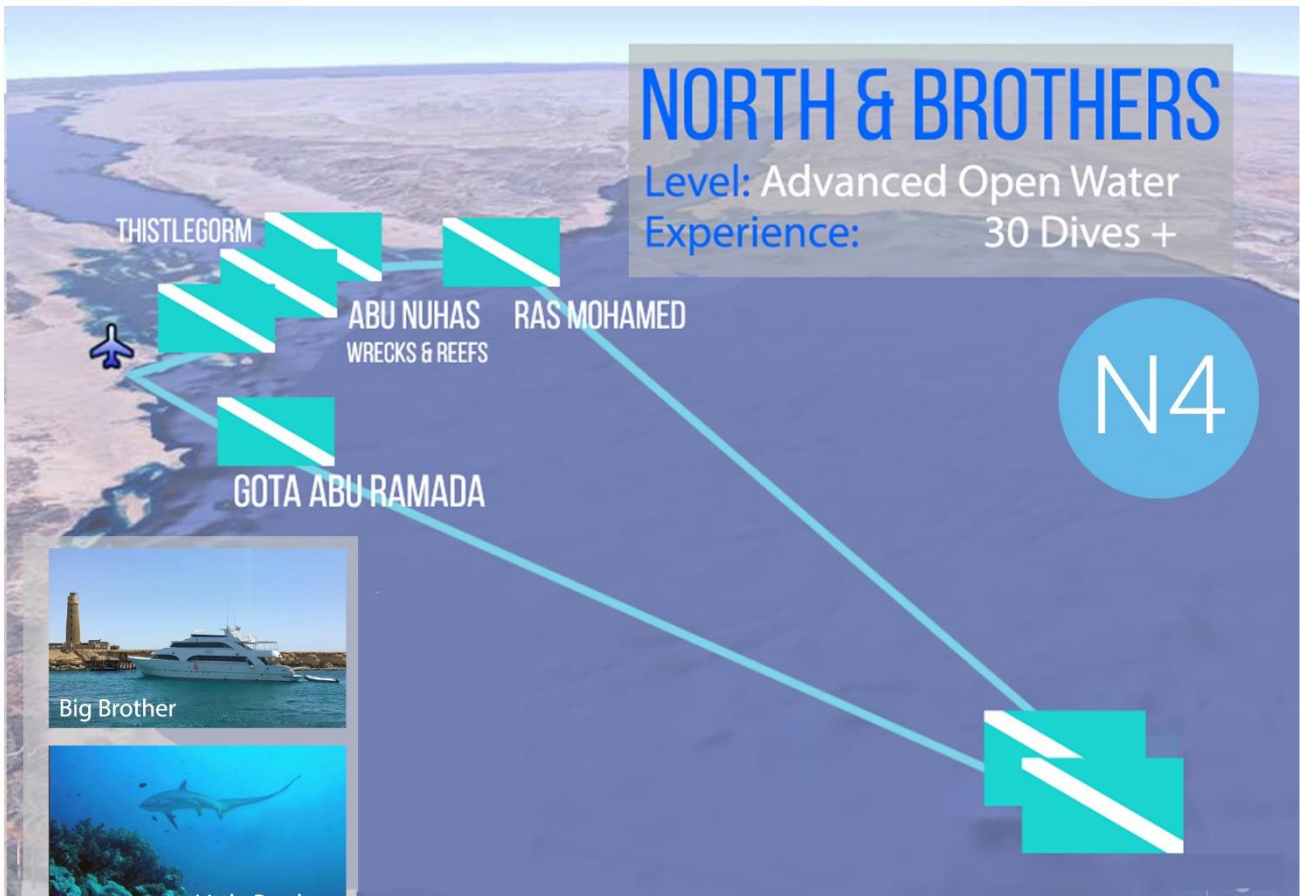




NORTH & BROTHERS

Level: Advanced Open Water
Experience: 30 Dives +

N4



HIGHLIGHTS

Soft Corals	
Hard Corals	
Wrecks	
Marine Life	
Sharks	
Caves	

World class diving at the SS Thistlegorm and Ras Mohamd along with the high probability of shark sightings at Brother Islands.

ITINERARY

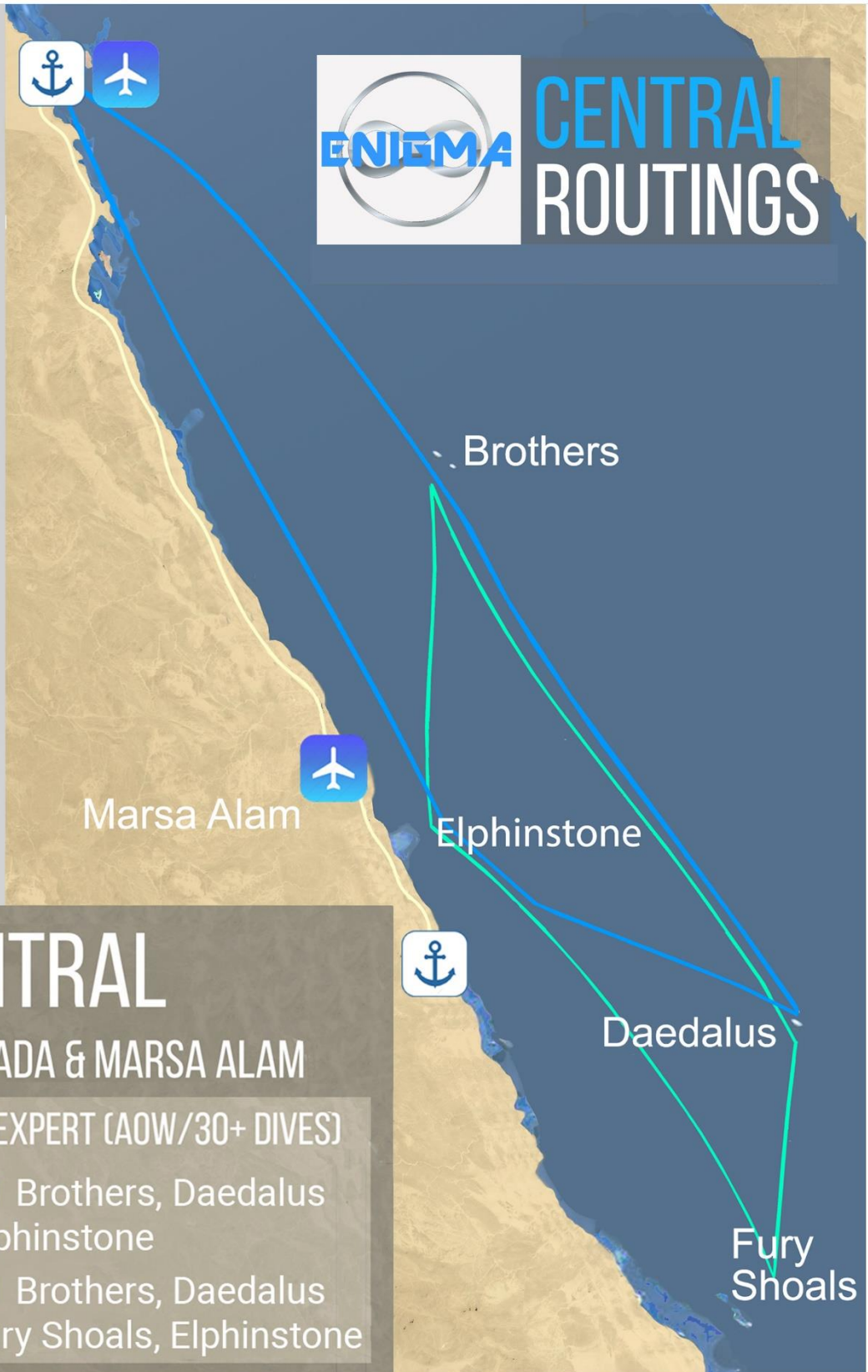
- Day 1 Check in 12 noon to 7am
- Day 2 Check Dives Hurghada
- Day 3 Brothers
- Day 4 SS Thistlegorm
- Day 5 Ras Mohamed
- Day 6 Brothers
- Day 7 Hurghada dives- Rtn Port
- Day 8 Check out

Please Note:

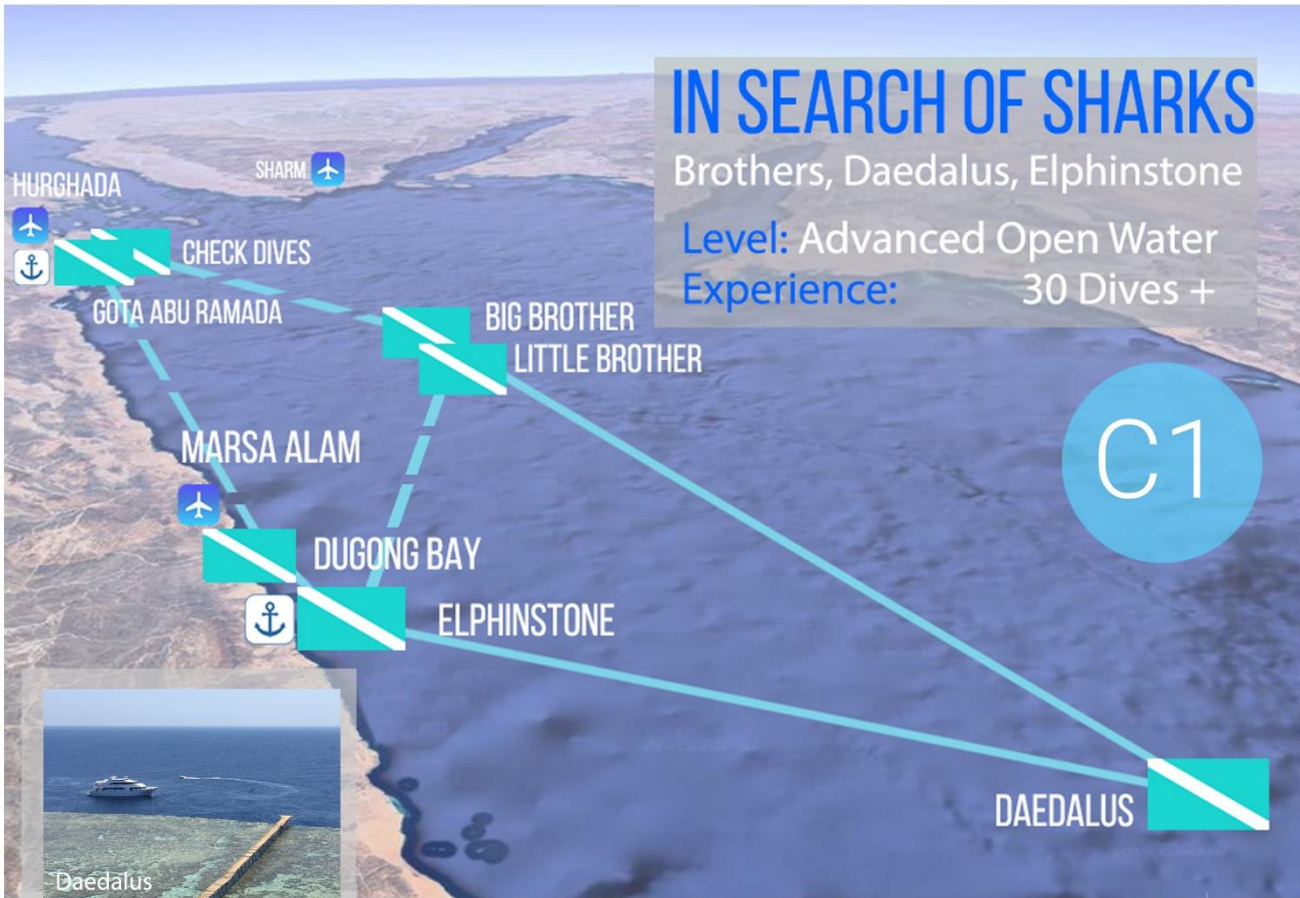
Please note that routes and / or departure / arrival ports may be subject to change due to weather conditions and / or coastguard instructions./ restrictions.



RED SEA ROUTINGS



ENIGMA



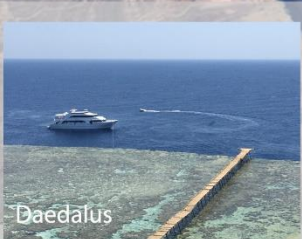
IN SEARCH OF SHARKS

Brothers, Daedalus, Elphinstone

Level: Advanced Open Water

Experience: 30 Dives +

C1



Daedalus



Elphinstone



HIGHLIGHTS

Soft Corals	██████████
Hard Corals	██████████
Wrecks	██████
Marine Life	██████████
Sharks	██████████
Walls	██████████

The Central Classic, sometimes know as the "Shark Route" with departures from both Marsa Alam and Hurghada. With the added bonuses of Aida wreck and Dugong Bay!

ITINERARY

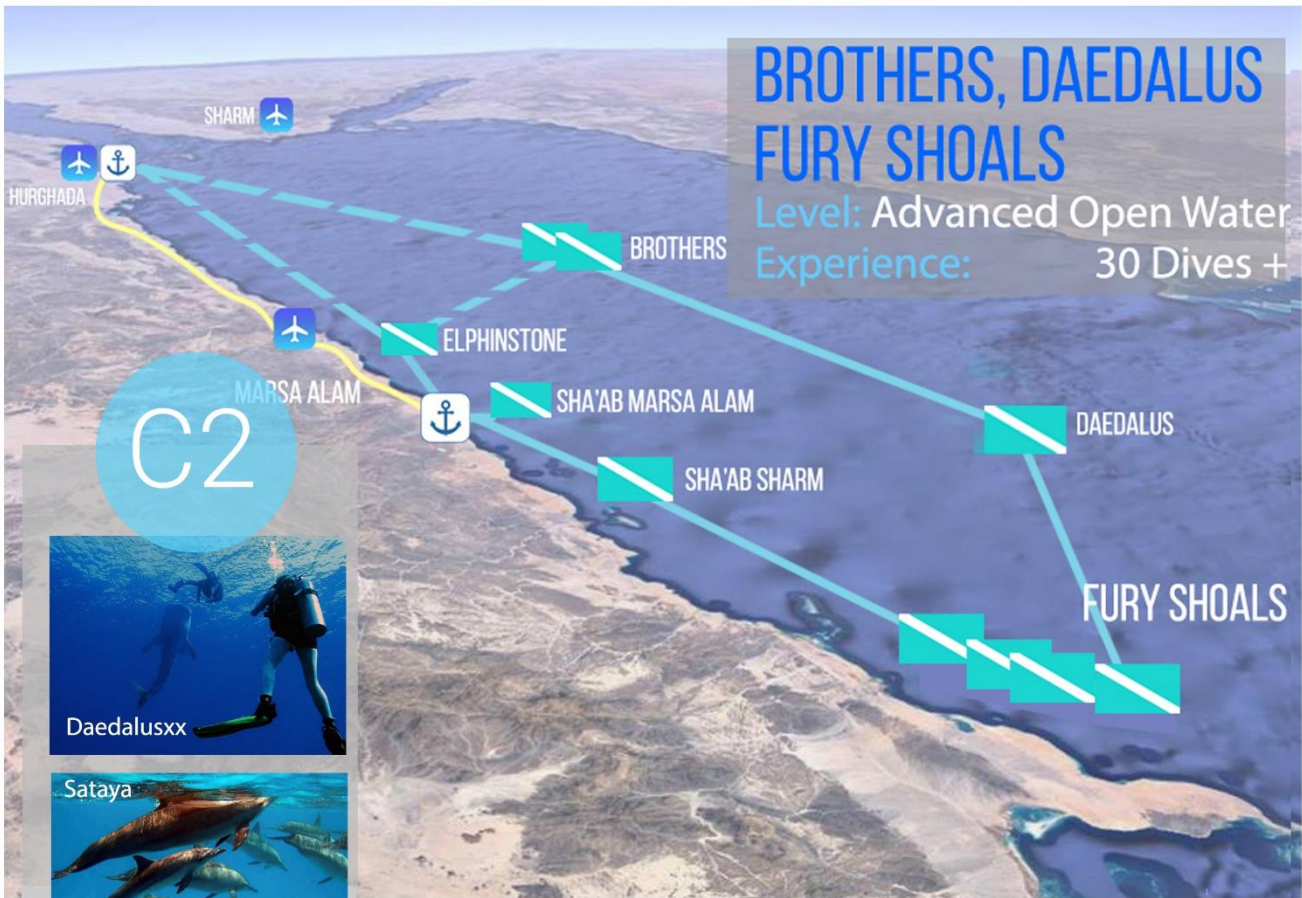
- Day 1 Check in 12 noon to 7am
- Day 2 Check Dives Hurghada
- Day 3 Brothers
- Day 4 Daedalus
- Day 5 Daedalus
- Day 6 Brothers
- Day 7 Elphinstone- Return Port
- Day 8 Check out

Please Note:

Please note that routes and / or departure / arrival ports may be subject to change due to weather conditions and / or coastguard instructions./ restrictions.

Quality and Affordability

ENIGMA



HIGHLIGHTS

Soft Corals	<div style="width: 100%; height: 10px; background-color: #00AEEF;"></div>
Hard Corals	<div style="width: 75%; height: 10px; background-color: #00AEEF;"></div>
Wrecks	<div style="width: 100%; height: 10px; background-color: #00AEEF;"></div>
Marine Life	<div style="width: 100%; height: 10px; background-color: #00AEEF;"></div>
Sharks	<div style="width: 100%; height: 10px; background-color: #00AEEF;"></div>
Walls	<div style="width: 100%; height: 10px; background-color: #00AEEF;"></div>

The Central Classic "Shark Route" with the addition of the Fury Shoals coral wonderland. Sharks, Dolphins, Dugong and teeming reefs. Departures from Hurghada and Marsa Alam.

ITINERARY

- Day 1 Check in 12 noon to 7am
- Day 2 Check Dives Hurghada
- Day 3 Brother Islands
- Day 4 Daedalus
- Day 5 Fury Shoals
- Day 6 Fury Shoals
- Day 7 Elphinstone
- Day 8 Check out

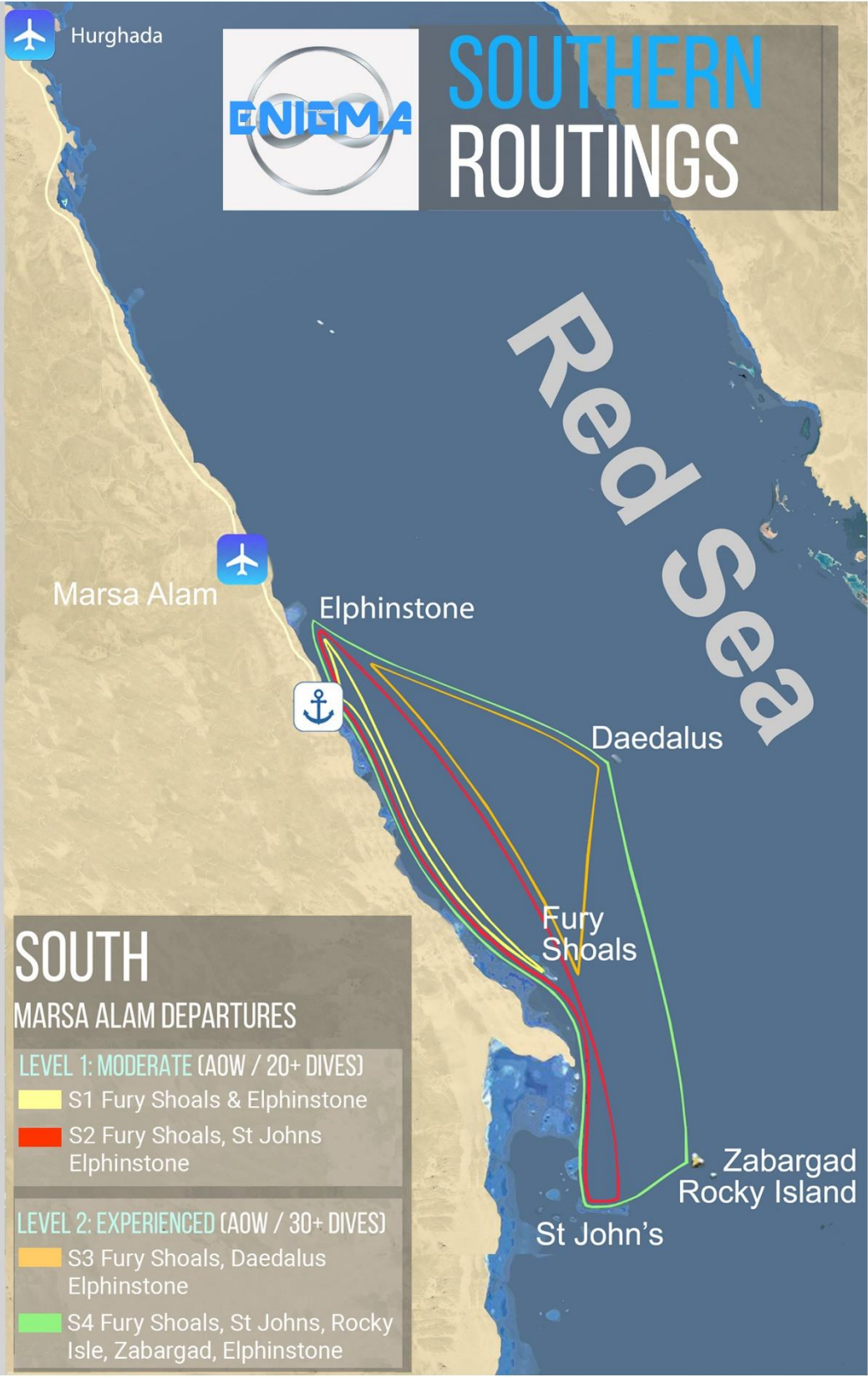
Please Note:

Please note that routes and / or departure / arrival ports may be subject to change due to weather conditions and / or coastguard instructions./ restrictions.

Quality and Affordability



RED SEA ROUTINGS



ENIGMA



HIGHLIGHTS

Soft Corals	
Hard Corals	
Wrecks	
Marine Life	
Sharks	
Caves	

The best of the Southern coast. Suitable for all levels of group and including the highlights of Dolphins at Sataya, the Tien Tsing wreck and the possibility of Sharks at Elphinstone.

ITINERARY

- Day 1 Check in 12 noon to 7am
- Day 2 Check Dives Marsa Alam
- Day 3 Fury Shoals
- Day 4 Fury Shoals
- Day 5 Southern Coastline
- Day 6 Southern Coastline
- Day 7 Elphinstone- Return Port
- Day 8 Check out

Please Note:

Please note that routes and / or departure / arrival ports may be subject to change due to weather conditions and / or coastguard instructions./ restrictions.

Quality and Affordability



FURY SHOALS, ST JOHN'S
 Level: Advanced Open Water
 Experience: 20 Dives +

S2



Elphinstone



Fire Coral



St Johns



Tien Tsing Wreck



HIGHLIGHTS

Soft Corals	
Hard Corals	
Wrecks	
Marine Life	
Sharks	

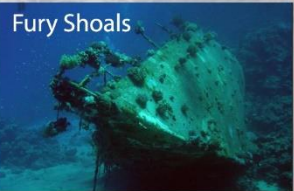
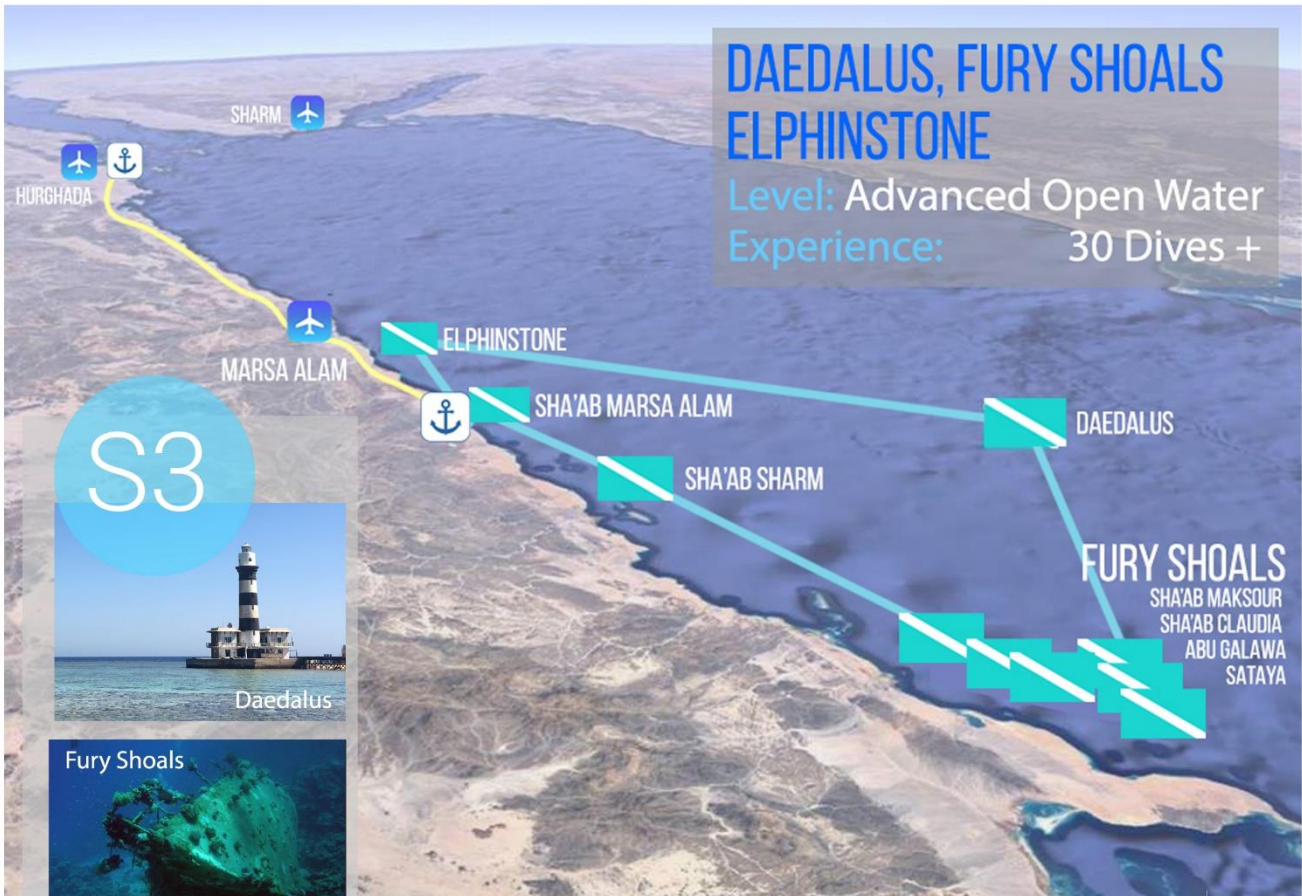
Modrate tour for the less experieced diver, but with all the attractions needed for the more hard core group!
 Dolphins at Sataya, chance of Sharks at Elphinstone and the stunning colours of Fury Shoals

ITINERARY

- Day 1 Check in 12 noon to 7am
- Day 2 Marsa Alam Check Dives
- Day 3 Fury Shoals
- Day 4 Fury Shoals
- Day 5 St Johns
- Day 6 St Johns
- Day 7 Elphinstone- Return Port
- Day 8 Check out

Please Note:

Please note that routes and / or departure / arrival ports may be subject to change due to weather conditions and / or coastguard instructions./ restrictions.



HIGHLIGHTS

- Soft Corals
- Wrecks
- Marine Life
- Sharks
- Caves

Short distance tour including the best. Search for sharks at Daedalus and Elphinstone, swim-with Dolphins at Sataya and marvel at the amazing corals and teeming marine life of the Fury Shoals

ITINERARY

- Day 1 Check in 12 noon to 7am
- Day 2 Marsa Alam Check Dives
- Day 3 Fury Shoals
- Day 4 Fury Shoals
- Day 5 Daedalus
- Day 6 Daedalus
- Day 7 Elphinstone- Return Port
- Day 8 Check out

Please Note:
Please note that routes and / or departure / arrival ports may be subject to change due to weather conditions and / or coastguard instructions./ restrictions.

ENIGMA



FURY SHOALS, ST JOHN'S, DAEDALUS, ELPHINSTONE

Level: Advanced Open Water
Experience: 30 Dives +

S4



Rocky Island



Rocky Island



Oceanic White Tip



Daedalus Anemone Garden



HIGHLIGHTS

- Corals
- Wrecks
- Marine Life
- Sharks
- Walls

All of the amazing wonders of the deep south in one package. Dolphins at Sataya, the high probability of sharks at Rocky Island, Daedalus & Elphinstone, plus the teeming corals of the Fury Shoals.

ITINERARY

- Day 1 Check in 12 noon to 7am
- Day 2 Check Dives Marsa Alam
- Day 3 Fury Shoals
- Day 4 St Johns
- Day 5 Rocky/Zabargad
- Day 6 Daedalus
- Day 7 Elphinstone- Rtn Port
- Day 8 Check out

Please Note:

Please note that routes and / or departure / arrival ports may be subject to change due to weather conditions and / or coastguard instructions./ restrictions.

Quality and Affordability

ENIGMA



*We look forward
to welcoming
you aboard soon!*



Quality and Affordability